



Features

- Excellent color rendering (92+ CRI)
- 3000K Warm White LED light
- Lumen output up to 975 Lumens
- Compatible with CLIQ 56 square trims
- Dimmable with most TRIAC, CL, or ELV dimmers
- Remote driver with hardwire junction box
- Spring loaded mounting clips
- Type IC and cETLus Listed for wet locations
- 35,000 hours rated life
- ENERGY STAR pending

Available Finishes



White

Dimming Options

- TRIAC (10-100%)
- CL (10-100%)
- ELV (10-100%)

Listing / Ratings



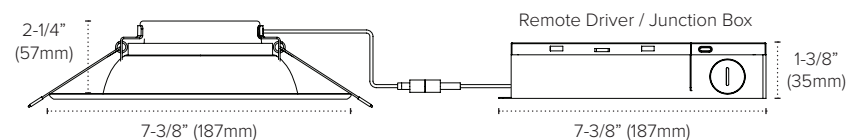
EPIQ DIRECT 6 Downlight

This remodel and new construction downlight option installs without a recessed housing. The driver is housed remotely in a 120V wiring box, instead of on the back of the downlight, so the clearance height needed is only 2-1/4". EPIQ Directs ship with remote driver/junction box, interconnecting cables and cut-out template. Rough-in plate is available (sold separately) for new construction use.

Technical Information

Series	E6-RE-30-WH
Input Voltage	120V AC, 60Hz
CCT	3000K
CRI	92+
Wattage	12.8W
Lumens	975Lm
Beam Angle	85°
Dimmable	10-100%*
Mounting	Recessed mount (5-1/2" Cut-out Dia.)
Rating	cETLus Listed; Type IC; Suitable for wet locations
Rated Life	35,000 hrs

*Minimum loads may apply



EPIQ DIRECT 6 Downlight

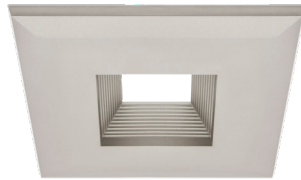


White Multiplier
E6-RE-30-WH
 120V AC / 3000K / 975Lm / 12.8W

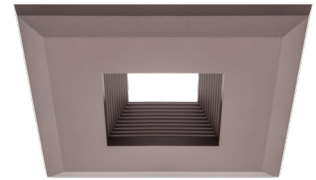
CLIQ 56 Trim



White Baffle
Q56-B-WH



Nickel Baffle
Q56-B-NK



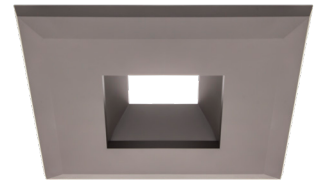
Dark Bronze Baffle
Q56-B-DB



White Smooth
Q56-WH

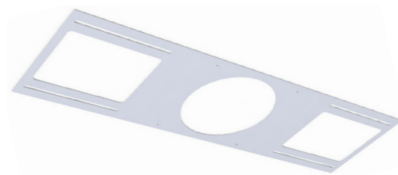


Nickel Smooth
Q56-NK



Dark Bronze Smooth
Q56-DB

EPIQ DIRECT 6 Accessories



6" Rough-in Plate
RP-E6/EM6

TRULUX LIGHTING SYSTEMS

TASK LIGHTING

EPIQ DIRECT 6
 DOWNLIGHTING

LINEAR LIGHTING

ARCHITECTURAL LIGHTING

POWER SUPPLIES